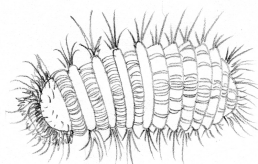
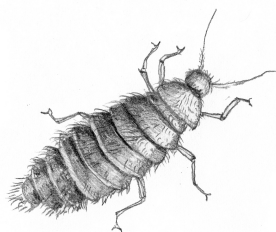


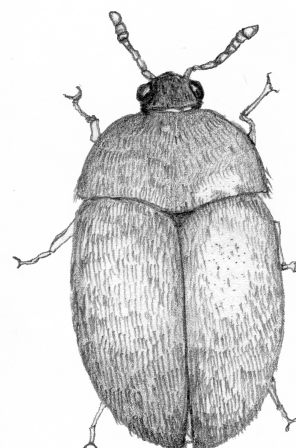
Male Odd Beetle
or Tissue Paper Beetle
Thylodrias contractus
(Adults and larvae) 2-3mm

Inspired by Fleming College's insect ID cards. Created by Meaghan Perry and Mary Baughman, Ransom Center, Austin, Texas.



Female Odd or Tissue Paper Beetle and larva
Thylodrias contractus
(Adults and larvae) 2-3mm

Inspired by Fleming College's insect ID cards. Created by Meaghan Perry and Mary Baughman, Ransom Center, Austin, Texas.



Brown carpet beetle
Attagenus smirnovi
(Adult) 5-6mm

Inspired by Fleming College's insect ID cards. Created by Meaghan Perry and Mary Baughman, Ransom Center, Austin, Texas.



Gomez, Morticia, and Itt
the Odd Beetle family

Color: The male Odd Beetle has yellowish brown, semi-transparent elytra (wing covers), and the abdomen has 7 sternal segments. The female looks very different from the male; though it has legs and antennae, it lacks elytra and hind wings. Odd Beetles live between 9 and 50 days as adults. There is a 7-14 day pupal stage before adulthood. From egg to adulthood, one insect can live up to 4 years, most of that time as a larva. The larvae resemble other Dermestid larvae.



Gomez, Morticia, and Itt
the Odd Beetle family

Color: The Odd Beetle female looks very different from the male; though it has legs and antennae, it lacks elytra and hind wings. Odd Beetle eggs are 0.7mm long, oval and translucent. Eggs hatch after approximately 1 month. The larvae resemble other Dermestid larvae, though they do not have long hairs at the tip of their abdomens. Odd beetle larvae feed on wool, silk, feathers, fur, dried skin, and insect collections. Larvae can molt smaller in stressful conditions, eating their own cast larval casing.



Anna Smirnova

Color: *A. smirnovi* has a black head and thorax. The head and pronotum are dark red, or dark brown to black. Their elytra are densely hairy and light brown. Fertilized females lay up to 60 eggs in small holes or other hiding places. The adults are found near the doors of buildings that contain food sources. The larvae are about 7 mm long, are brown on top and light brown underneath. They live about a year eating animal products, especially hair. When disturbed they feign death.